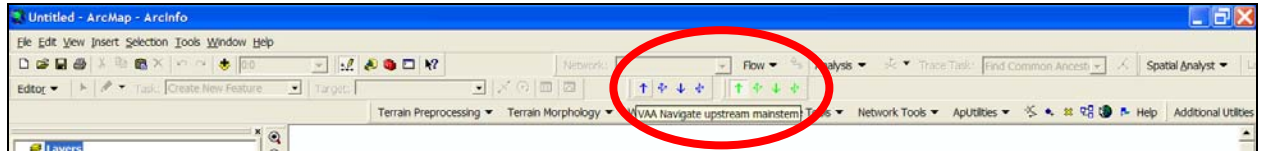
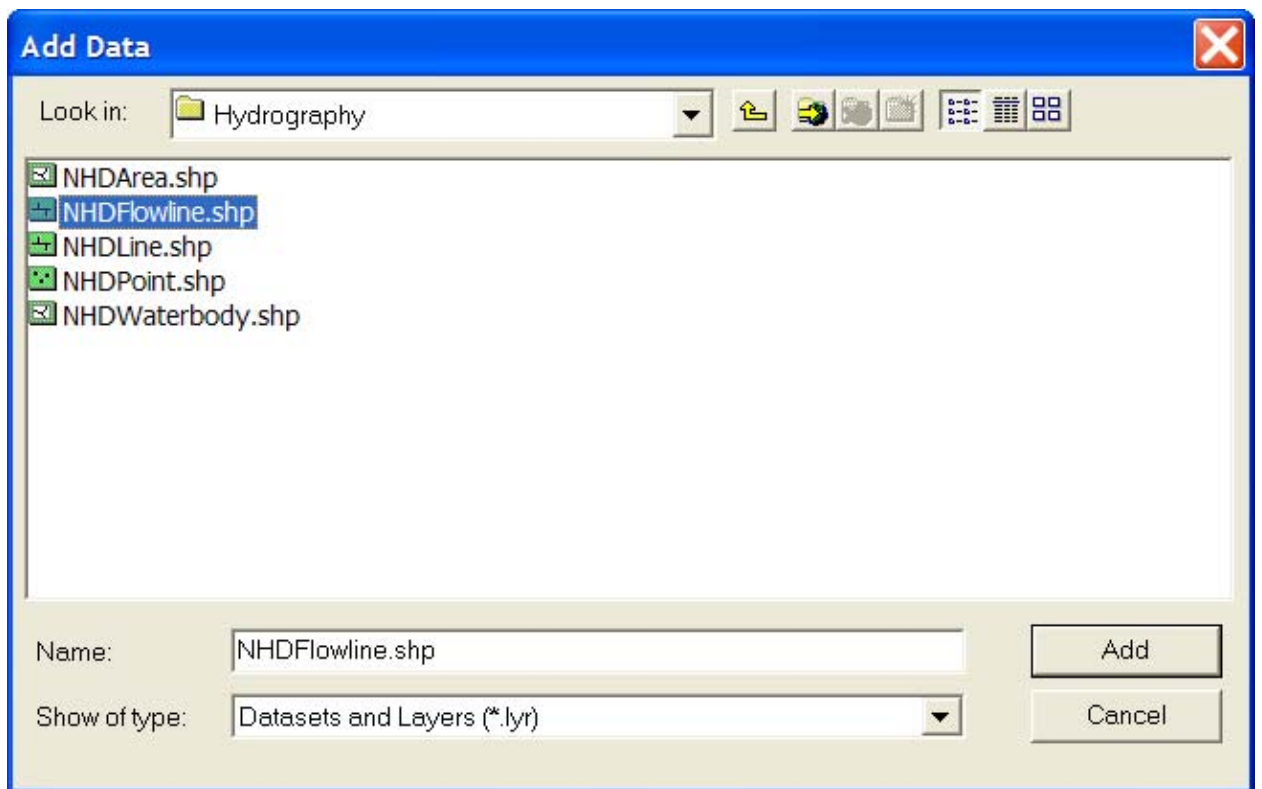



Exercise # 4: Navigating NHD with NHDPlus Value Added Attributes and the NHDPlus Flow Table – Last Updated on 4/30/2008


1. From ArcMap,
 - a. Confirm that the NHDPlus Navigation Tools are present in ArcMap. There are two toolbars, one with a set of blue arrows (VAA Navigators) and one with a set of green arrows (Flow Table Navigators).

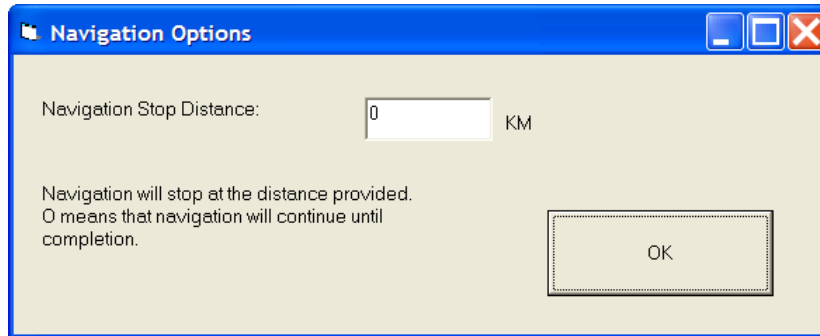



- b. Use the **File, Add Data** menu. In the **Add Data** dialog, navigate to the \NHDPlus06\Hydrography folder and select NHDFlowline.shp. Click **Add**.



- c. Use the zoom-in tool , to zoom in to an area in the NHDFlowline layer.

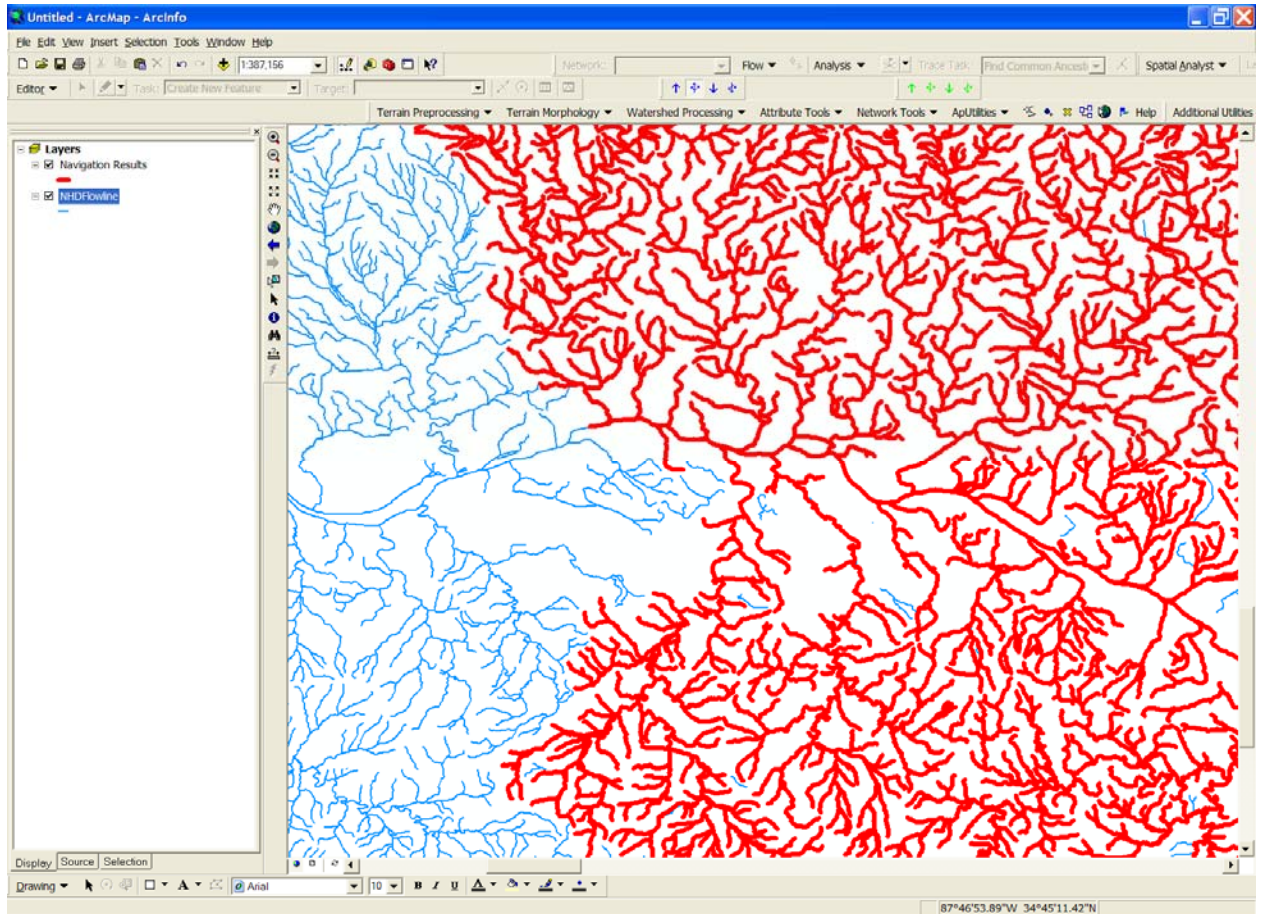
- d. Select one of the NHDPlus VAA Navigation tools.  Point and click on a NHDFlowline feature. In the Navigation Options dialog, you may select a Navigation Stop Distance. If this is set, the navigation will stop at all points on the network that are that distance from the starting point. If 0 is specified, the navigation will proceed to the end(s) of the network.




The first time you use the VAA Navigation Tools, a preprocess occurs that can take some time. If the VAA Navigator must perform this preprocess, a message is displayed and you must click . This message box may not clear right away.



The preprocess builds an ACCESS database called Tnavwork.mdb and places it with your NHDPlus data. In this exercise, Tnavwork.mdb is created in the \NHDPlus06 folder. Once Tnavwork.mdb exists, all subsequent uses of the VAA Navigation tools will use it.



The VAA Navigator adds a layer to the map called Navigation Results. This is a shapefile that has been built from an event table produced by the navigator. Note that because the VAA Navigator produces an event table, it can include partial NHDFlowlines at the starting and ending points of a navigation.

- e. Select one of the NHDPlus Flow Table Navigation tools.  Make sure the NHDFlowline layer is selected. Point and click on a NHDFlowline feature. The Flow Table Navigator does not have a distance option and the results are displayed as a selected set of NHDFlowlines. Note that because the Flow Table Navigator produces a selected set, it cannot include partial NHDFlowlines at the starting and ending points of a navigation.

